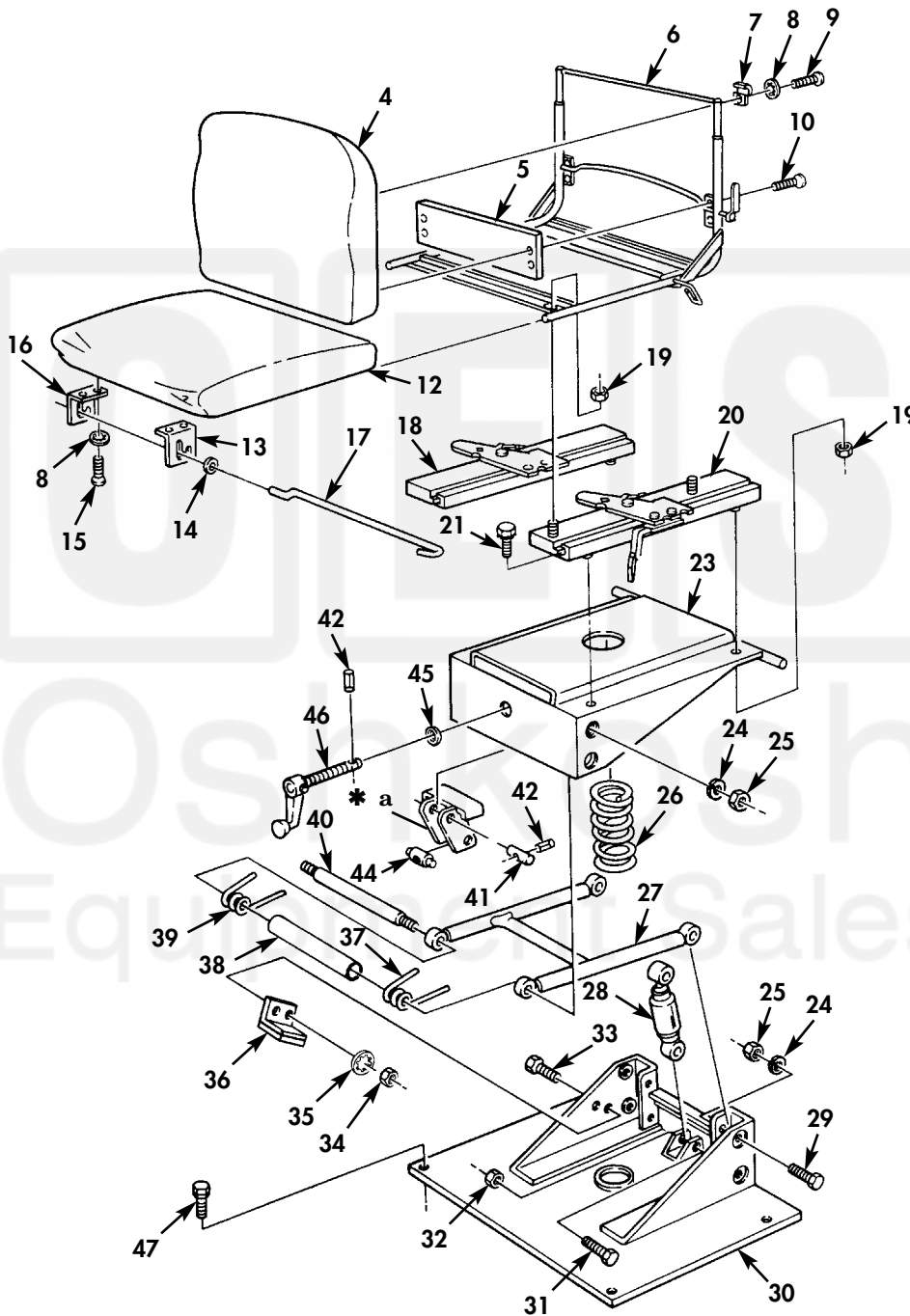


FIELD AND SUSTAINMENT MAINTENANCE  
REPAIR PARTS AND SPECIAL TOOLS LIST

TRUCK, CARGO: 2-1/2-TON, 6X6, M44A2 SERIES TRUCKS (MULTIFUEL)



\* a PART OF ITEM 43

Figure 119. Operator's Seat and Related Parts, Floating.

(1) ITEM NO	(2) SMR CODE	(3) NSN	(4) CAGEC	(5) PART NUMBER	(6) DESCRIPTION AND USABLE ON CODE (UOC)	(7) QTY
GROUP 1806 SEATS						
FIG. 119 OPERATOR'S SEAT AND RELATED PARTS,FLOATING						
1	PAOZZ	2540-00-407-2610	19207	11640442	SEAT,VEHICULAR.....	1
2	PFOFF	2540-01-063-5830	19207	11663385	.SEAT,VEHICULAR.....	1
3	PAOZZ	2540-00-460-5826	19207	11640526	..CUSHION,SEAT BACK,V.....	1
4	PAOZZ	2540-01-109-5674	19207	11662754	...COVER,SEAT,VEHICULA BACK.....	1
5	PAOZZ	2540-00-436-8289	19207	11640513	..SUPPORT,SEAT,VEHICU.....	1
6	PBOZZ	2540-01-108-5052	19207	11640521	..FRAME,SEAT,VEHICULA.....	1
7	PAOZZ	5340-00-004-6854	19207	11640507	..STRAP,RETAINING.....	2
8	PAOZZ	5310-00-550-1130	80205	MS35333-40	..WASHER,LOCK.....	6
9	PAOZZ	5305-00-988-1725	96906	MS35206-281	..SCREW,MACHINE.....	2
10	PAOZZ	5305-00-954-4295	96906	MS35190-287	..SCREW,MACHINE.....	4
11	PAOZZ	2540-00-460-5815	19207	11640522	..CUSHION,SEAT,VEHICU.....	1
12	PAOZZ	2540-01-109-5675	19207	11662755	...COVER,SEAT,VEHICULA.....	1
13	PAOZZ	5340-00-757-5877	19207	11640504-1	..BRACKET,ANGLE.....	1
14	PAOZZ	5310-00-809-3078	96906	MS27183-11	..WASHER,FLAT.....	2
15	PAOZZ	5305-00-988-1726	96906	MS35206-282	..SCREW,MACHINE.....	4
16	PAOZZ	5340-00-757-5901	19207	11640504-2	..BRACKET,ANGLE.....	1
17	PAOZZ	5340-01-117-3793	19207	11669053	.CLIP,SPRING TENSION.....	1
18	XAOZZ		19207	11669167-4	.SWITCH,PUSH.....	1
19	PAOZZ	5310-00-984-3807	81349	M45913/1-5FG5C	.NUT,SELF-LOCKING,HE.....	8
20	PAOZZ	2540-01-117-3025	4K392	481854	.ADJUSTER ASSEMBLY ADJUSTER TENSION,L.H.....	1
21	PAOZZ	5305-00-042-3561	24617	423561	.SCREW,ASSEMBLED WAS.....	2
22	PAOFF	2540-00-472-2733	19207	11640523	.PEDESTAL,SEAT.....	1
23	PFOZZ	2540-01-286-7673	19207	11640524-1	..FRAME,SEAT,VEHICULA.....	1
24	PAOZZ	5310-00-003-4094	26916	004-003005-057	..WASHER,LOCK.....	8
25	PAOZZ	5310-00-768-0318	96906	MS51967-14	..NUT,PLAIN,HEXAGON.....	8
26	PFOZZ	5360-00-832-0178	19207	11640508	..SPRING,HELICAL,COMP.....	1
27	PFOZZ	2540-00-470-1564	19207	11640520	..FRAME,SEAT,VEHICULA.....	2
28	PFOZZ	2510-00-489-7104	6B719	615116	..SHOCK ABSORBER,DIRE.....	1
29	PAOZZ	5306-00-020-0857	19207	11663341	..BOLT,SHOULDER.....	6
30	XAOZZ		19207	11640525	..FRAME ASSEMBLY.....	1
31	PAOZZ	5306-00-020-1058	19207	11662487	..BOLT,SHOULDER.....	2
32	PAOZZ	5310-00-880-7744	96906	MS51967-5	..NUT,PLAIN,HEXAGON.....	2
33	PAOZZ	5305-00-068-0502	96906	MS90725-6	..SCREW,CAP,HEXAGON H.....	4
34	PAOZZ	5310-00-761-6882	96906	MS51967-2	..NUT,PLAIN,HEXAGON.....	4
35	PAOZZ	5310-00-550-1130	96906	MS35333-40	..WASHER,LOCK.....	4
36	PFOZZ	5340-00-470-1537	19207	11662489	..BRACKET,ANGLE.....	2
37	PFOZZ	5360-00-482-4813	19207	11640515-1	..SPRING,HELICAL,TORS.....	1
38	PFOZZ	3120-01-280-6050	19207	12302671	..BEARING,SLEEVE.....	1
39	PFOZZ	5360-00-482-4814	19207	11640515-2	..SPRING,HELICAL,TORS.....	1
40	PFOZZ	5307-00-102-0962	19207	11640510	..STUD,SHOULDERED.....	1
41	PAOZZ	5315-00-171-2590	19207	11640506	..PIN,STRAIGHT,HEADLE.....	1
42	PAOZZ	5315-00-841-4443	80205	MS16562-225	..PIN,SPRING.....	2
43	PFOZZ	2540-01-130-7946	19207	11640512	..SUPPORT,SEAT,VEHICU.....	1
44	PAOZZ	5315-01-259-2517	19207	11641043	...PIN,SHOULDER,HEADLE.....	1
45	PAOZZ	5310-00-001-4719	19207	11663036	..WASHER,SADDLE.....	1
46	PFOZZ	5342-00-470-1543	19207	11640516	..CONTROL ROD.....	1
47	PAOZZ	5305-01-104-9018	19207	11663070	SCREW.....	4

END OF FIGURE